



# SHINE WASH

Professional Manufacturer of Car Washing Machines

> > > > >



郑州程傲科技有限公司  
Zhengzhou ShineWash Technology Co., Ltd.

## ABOUT SHINEWASH

Zhengzhou Shinewash Technology Co. Ltd. was founded in 2016, which is a professional automatic car wash machine manufacturer in Zhengzhou, China.



Our company focuses on researching, developing and manufacturing full-automatic car wash machines which include tunnel car wash system, rollover (gantry) car wash machine, 360 degrees touchless car wash machine, bus wash machine and truck wash machine.

We have more than 50,000 square meters of production and office area and over 100 employees. Shinewash is a famous brand of car wash machine in China. We exported automatic car wash machines more than 80 countries in past years.

SHINEWASH always adheres to the needs of customers as the guide, in order to create high-quality, high-reliability, energy-saving automatic car washing equipment.

*Shinewash! make the car wash more easier!*







With the ability to apply for all certificate according to request

## Professional supplier & direct factory

3-7 days fast Delivery

Customization at will

Different wash modes available

### ●Payment Software:

- ① Standard: Support IC card swiping, paper money and coin start-up functions at the same time.
- ② If need the local bank payment services, can be customized.

Quality is the foundation for the survival of enterprises. Shinewash pays more attention to quality than buyers. The machine adopts internationally famous brand accessories. And Shinewash has a professional quality inspection department to ensure that every machine is qualified before leaving the factory, and the machine life time is more than 15 years!

### ●Installation And Training:

- ① Remote installation service: We arrange engineers to assemble a machine of the same model on site in China, and synchronously guide video communication with foreign customers in real time.
- ② USD 50 / day / one engineer (about 7-10 days' Installation & training) Customer need to afford round trip air ticket, visa, hotel for 2 engineers.
- ③ Including all the on-ground installation & training fee within 3 months if the order quantities more than 10 sets once time.

### ●Remote fault detection

Remote online real-time detection of equipment failures can analyze the faults and solutions within seconds after car washing equipment failures. This fuction can be added for free, only need customer to provide a local 4G mobile phone card.

## Shinewash Service

Pre sales service	After sales service
Free product proposals	Engineer on-ground installation support, maintenance, fixing and training for 6 months
Car wash machine customization (logo; payment software; package; wash procedure)	Lifelong technical support and english manual and other document provided
Construction drawing design	Three years warranty and parts free provided

ShineWash is the professional manufacturer, mainly engaged in the production of unattended automatic car washing machines, has 4 machine series

Product Series	Models				
Rollover Car Wash System	S1	S3	S9		
Tunnel Car Wash System	Q7	Q9	Q11	Q14	
Touchless Car Wash System	K3	K6	K9	Z9	
Bus/Truck Wash System	R3	R5	T4	T5	T6



All of the above automatically car wash machines can be customized by the customer requirements.welcome your inquiry anytime!

## Rollover 5 Brush Car Wash Machine

### Features

The car stops at a fixed position, and the car wash machine moves back and forth according to the wash mode.

### Function

Automatic spraying of special washing liquid and wax, automatic brushing, automatic air drying. A dirty car goes in and a clean car comes out. The washing time is about 2.5-5 minutes. Suitable for car beauty shops with about 120 daily washing vehicles.

Rollover car wash machine has 3 models for choice, S1, S3 and S9.



Model	S1	Shampoo & Water Wax Consumption	10-30ML/Car
Machine Size (m)	L2.2*W3.6*H2.96	Electricity Consumption	0.6KWH/Car
Max. Car Size (m)	L6*W2.1*H2.1	Power Supply	380V 50HZ 20KVA
Standard Installation Size (m)	L11*W3.7*H3.1	Power	25KW
Suitable Cars	Car / Jeep / minivan with less than 7 seats	Top Brush	1
Wash Time	2.5-5min/Car	Big Vertical Brush	2
Water Consumption	60-80L/Car	Side Brush	2



Model	S3	Shampoo & Water Wax Consumption	10-30ML/Car
Machine Size (m)	L2.85*W3.85*H3	Electricity Consumption	0.6KWH/Car
Max. Car Size (m)	L6*W2.1*H2.1	Power Supply	380V 50HZ 20KVA
Standard Installation Size (m)	L11*W3.7*H3.1	Power	25KW
Suitable Cars	Car / Jeep / minivan with less than 7 seats	Top Brush	1
Wash Time	2.5-5min/Car	Big Vertical Brush	2
Water Consumption	60-80L/Car	Side Brush	2



Model	S9	Shampoo & Water Wax Consumption	10-30ML/Car
Machine Size (m)	L3.41*W3.7*H2.9	Electricity Consumption	0.6KWH/Car
Max. Car Size (m)	L6*W2.1*H2.1	Power Supply	380V 50HZ 20KVA
Standard Installation Size (m)	L11*W3.7*H3.1	Power	25KW
Suitable Cars	Car / Jeep / minivan with less than 7 seats	Top Brush	1
Wash Time	2.5-5min/Car	Big Vertical Brush	2
Water Consumption	60-80L/Car	Side Brush	2

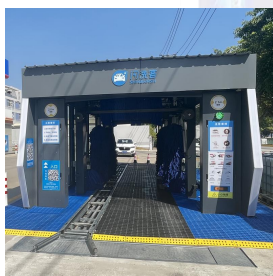
## Tunnel Car Wash Machine

### Features

It operates on a conveyor belt system, pulling vehicles through a washing tunnel, the car will go through all necessary steps inside the tunnel, from pre-soaks all the way to drying at the final end, can wash cars quickly and reach a very high cleaning effect.

### Washing steps

High-pressure flushing ----- foam ----- brush washing ----- high-pressure flushing ----- spraying water wax ----- air drying



Model	7 Brushes Tunnel type Q7	9 Brushes Tunnel type Q9	11 Brushes Tunnel type Q11	14 Brushes Tunnel type Q14
Machine Size (m)	L10*W4*H3	L12.5*W4*H3	L15*W4*H3	L17.5*W4*H3
Max. Car Size (m)	L≤unlimited*W≤2.3*H≤2.1			
Installation Size (m)	L22*W4.5*H3.2	L24×W4.5×H3.2	L27×W4.5×H3.2	L30×W4.5×H3.2
Suitable Cars	Sedans, SUVs, MPV, etc.			
Wash Speed	40 cars/hour	60 cars/hour	60-80 cars/hour	80-100 cars/hour
Water Consumption	80-150L/car	80-150L/car	80-150L/car	80-150L/Car
Foam Consumption	7ML/Car	7ML/Car	7ML/Car	7ML/Car
Water Wax Consumption	12ML/Car	12ML/Car	12ML/Car	12ML/Car
Electricity Consumption	0.6KWH/Car	0.6KWH/Car	0.6KWH/Car	0.6KWH/Car
Power Supply	380V/50Hz/45KW	380V/50Hz/45KW	380V/50Hz/45KW	380V/50Hz/50KW
Fan Drying Motor	SIX Groups drying motor: 45KW			
Top Brush	1	1	1	1
Big Vertical Brush	4	4	4	4
Side Brush	2	4	4	4
Horizontal Wheel Brush	/	/	2	2
Dry brush				3

## Touchless Car Wash Machine

Washing steps

Chassis&hubs washing ----- wipe free washing ----- high-pressure water flushing ----- foam ----- high-pressure water flushing ----- water wax spraying ----- air drying



Model	K3	Water Pressure	100-120KG
Machine Size (m)	L6.8*W3.5*H3.05	Foam Consumption	20-150ML
Max. Car Size (m)	L6.0*W2.5*H2.1	Water Wax Consumption	20-150ML
Installation Size (m)	L7*W3.65*H3.1	Electricity Consumption	0.5-0.8KWH/Car
Fan Drying Motor	3*4KW	Power Supply	380V 50HZ
Wash Time	2-5min/Car	Water Pump Motor Power	15KW
Water Consumption	90-140L	Suitable Cars	Sedans, SUVs, MPV, etc.



Model	K6	Water Pressure	100-120KG
Machine Size (m)	L6.8*W3.5*H3.05	Foam Consumption	20-150ML
Max. Car Size (m)	L6.0*W2.5*H2.1	Water Wax Consumption	20-150ML
Installation Size (m)	L7*W3.65*H3.1	Electricity Consumption	0.5-0.8KWH/Car
Fan Drying Motor	4*5.5KW	Power Supply	380V 50HZ
Wash Time	2-5min/Car	Water Pump Motor Power	15KW
Water Consumption	90-140L	Suitable Cars	Sedans, SUVs, MPV, etc.



Model	K9	Water Pressure	100-120KG
Machine Size (m)	L7.5*W3.5*H3.1	Foam Consumption	20-150ML
Max. Car Size (m)	L6.4*W2.5*H2.2	Water Wax Consumption	20-150ML
Installation Size (m)	L8*W4*H3.3	Electricity Consumption	0.5-0.8KWH/Car
Fan Drying Motor	4*5.5KW	Power Supply	380V 50HZ
Wash Time	2-5min/Car	Water Pump Motor Power	22KW
Water Consumption	90-140L	Suitable Cars	Sedans, SUVs, MPV, etc.



Model	K1-mini	Water Pressure	100-120KG
Machine Size (m)	L6.0*W3.5*H3.05	Foam Consumption	20-150ML
Max. Car Size (m)	L5.6*W2.5*H2.1	Water Wax Consumption	20-150ML
Installation Size (m)	L6.5*W3.6*H3.1	Electricity Consumption	0.5-0.8KWH/Car
Fan Drying Motor	3*4KW	Power Supply	380V 50HZ
Wash Time	2-5min/Car	Water Pump Motor Power	15KW
Water Consumption	90-140L	Suitable Cars	Sedans, SUVs, MPV, etc.

## Gantry/Rollover Bus/Truck Wash Machine

**Main structure:**

The 4.5mm and locally 8mm plates are cut by laser to accurately locate the positions of various parts, and then assembled by tenon and mortise structure, hot galvanized paint.

**Safety function:**

Emergency stop function, vehicle identification function, itemized action technology, automatic audible and visual alarm system

**Washing process:**

In the whole process, the bus/truck position is detected by photoelectricity, and the functions of starting → high-pressure water washing + foam cleaning → top brush → left and right large vertical brushes → high-pressure water washing are used to clean the bus/truck body in all directions.



Model	R3	R5
Machine Size (m)	L*W*H: 2500*4500*5500mm	L*W*H: 4500*4500*5500mm
Max. Vehicle Size (m)	L*W*H: 12000*3000*4500m	L*W*H: 12000*3000*4500m
Installation Size (m)	L*W*H: 18000*6500*5700mm	L*W*H: 21000*6500*5700mm
Suitable Wahing mode	Various types of Bus, Truck, Train carriage etc.	
Wash Time	3-5 minutes per vehicle	
Water Consumption	150L-200L per vehicle	
Foam Consumption	25-30ML per vehicle	
Electricity Consumption	0.5KWH per vehicle	
Machine Power	10KW	11KW
Power Supply	3-phase,5 wires 380V/50HZ	
Average washing quantity	15-20 vehicles/ hour	
Top Brush	1	1
Big Vertical Brush	2	2
Side Brush	/	2

## Drive-Through Bus/Truck Wash Machine

Main function:

1. Each motor is reliably grounded and has multiple protection functions such as overcurrent, overvoltage, undervoltage and fault to ensure the safety of equipment and personnel
2. It has perfect system protection function. In case of fault, the system can be shut down in an emergency, and alarm and fault content display can be performed at the same time.
3. It has the function of fully automatic cleaning the front, rear, top and outer surfaces of both sides, and can automatically avoid the rearview mirror
4. Has perfect fault self diagnosis function and safety protection system.

Washing Progress:

The driver controls the forwarding and stopping of the vehicle according to the signal indicator lights set at the car wash station. When the green light of the entry signal light is on, the vehicle is slowly entering, and the car washing machine will start automatically. The car washing machine uses the channel cleaning method to clean the vehicle.

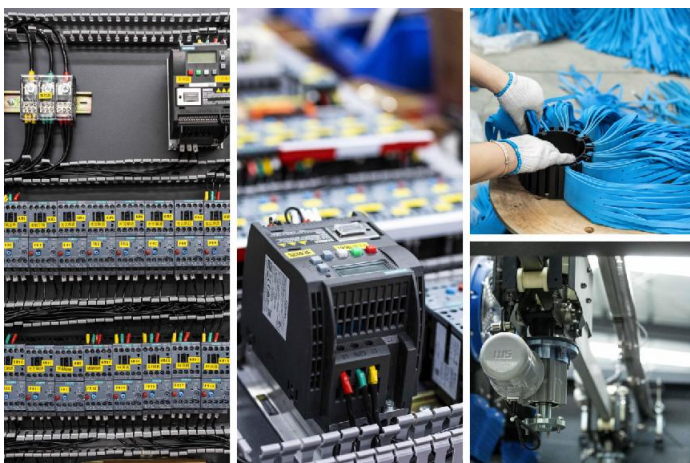
When the side brushes clean both sides of the car, the swing arm wrap-around unobstructed side brush system automatically cleans the rear of the car. After washing, the vehicle leaves the car wash line.



Model	T4	T5	T6
Machine Size (m)	L*W*H:8000*5000*5300mm	L*W*H:12000*5000*5300mm	L*W*H:18000*5000*5300mm
Max. Vehicle Size (m)	L(Limited)*W*H:3000*4000m	L(Limited)*W*H:3000*4000mm	L(Limited)*W*H:3000*4000m
Suitable Wahing mode	Various types of Bus, Truck, Train carriage etc.		
Wash Time	2-3 minutes per vehicle		
Water Consumption	150L-200L per vehicle		
Foam Consumption	25-30ML per vehicle		
Electricity Consumption	0.5KWH per vehicle		
Machine Power	19KW	35KW	45KW
Power Supply	3-phase,5 wires 380V/50HZ		
Average washing quantity	20-30 vehicles / hour		
Top Brush	Customized	1	Customized
Big Vertical Brush	2	2	4
Side Brush	2	2	2

## Main Parts Brand and Place of Origin

Name	Brand	Specification	Place of Origin
Control System PLC	Mitsubishi	FX3U-80MR/ES-A	Japan
Photoelectric Sensor	Banner	S186E/S18SN6R	America
Proximity Switch	Pepperl+Fuchs	M12/M18/M30	Germany
Frequency Converter	Siemens	6SL3210-5BE17-5UVO	Germany
AC Contactor	Siemens	3RT6016-1AN22/3RT6018-1AN22	Germany
Heat Protector	Siemens	3RU6116-1AB0/1CB0/1GB0/4AB0	Germany
Switching Power Supply	Mean Well	RSP-320-24	Taiwan
Terminal Blocks	Weidmuller	UK-6N/UK-5N	Germany
Terminal Blocks	Nanou	UKK5	Zhejiang
Pneumatic Electromagnetic Valve	AirTAC	4V210-08-B terminal type DC24V PT	Taiwan
Waterproof Motor Reducer	SITI/ASJ	1: 50/1: 60/1: 15 /1: 30-0.37---1: 60-0.55	Italy /China
Fan	Yongcheng	5.5KW	Guangdong
Water Pump	Dayuan	3-96	Zhejiang
Brush	Mairun	L450*150*T3.8/L520*150*T3/L520*150*T3.8	Xiamen
Current Detector	Qidian	MK1526 AC0-5A/4-20MA power supply 24V	Anhui
Signal Isolator	Qidian	GLK-11 /4-20MA/4-20MA power supply 24V	Anhui
Solenoid Valve for Water	Yongchuang	YCD21-15GBN-S91B	Ningbo
Touch Display Screen	Weinview	MT6071IE	Taiwan
Air Cylinder	AirTAC	M32*125	Taiwan
Relay	Weidmuller	DRM270024L	Germany



some accessories show

# Main Configuration

Main System		Main System	
1	Integral hot-dip galvanized steel main frame	15	Intelligent copy current top brush system
2	Module design, mortise and tenon structure	16	New rack drive unencumbered side arm system
3	Coupling conversion transition rotation system	17	High quality anti-kneading pipe and wire/stainless steel accessories
4	Specially thickened bearing, precision rotating chain	18	Pressure resistant and flexible high pressure water pipe
5	International famous brand electric and pneumatic system control center	19	LED signal light and display system
6	Triple photoelectric protection 180 degree touch anti-collision Technology	20	Anti freezing and drainage function in winter
7	22KW fixed air drying fan	21	Free switching function of multiple wash modes
8	Intelligent variable frequency speed control	22	Automatic high pressure water system
9	Intelligent proportioning of foam and water wax	23	Water circulation system
10	HD large screen embedded touch screen operation interface (central control and operating system)	24	Self protection system
11	Bonner photoelectric detection system	25	Intelligent anti-collision system
12	High performance Siti waterproof motor, reducer	26	Fault alarm and automatic processing system
13	Silent stainless steel high pressure centrifugal pump	27	Remote control parts operating system
14	Stainless steel waterproof sealing walking wheel	28	Emergency stop system of the whole machine



## New Frame Design

The overall frame of the equipment is first treated with high-temperature phosphating and hot galvanizing, and then with paint on the surface, which is corrosion-resistant and has super rust resistance. The main frame is made of high-quality normalized steel plates thickened by more than 5mm. The plates are accurately positioned by laser cutting, and then folded, shaped, sandblasted, galvanized, and painted, and assembled by mortise and tenon splicing. The whole machine is of standard modular design, sturdy and never deformed; The rust prevention process is first phosphated and galvanized, and the external high-temperature automobile paint baking absolutely ensures that the service life of the body exceeds 15 years.



## Imported Quality EVA Brush

Solid, non porous, soft and safe, no damage to paint, no sediment, no water absorption, not easy to twine, anti-aging, wear-resistant. The car body and tire parts are respectively configured with soft and hard brushes with different flexibility, and completely wrapped cleaning, it can not only ensure that the paint is not damaged, but also thoroughly clean the hub and other parts that are easy to accumulate dirt. The service life can reach 400,000 times. If 100 cars are washed every day, 36500 times a year, the service life is more than 10 years.



## New Intelligent Air drying Control System

Shinewash car wash machine adopts a 4-fan fixed air drying system, which can automatically adjust the air drying power according to the vehicle model, reducing power consumption and saving energy under the condition of ensuring the air drying rate of more than 95%. The main body of the fan adopts turbine type, with noise reduction of more than 60%.



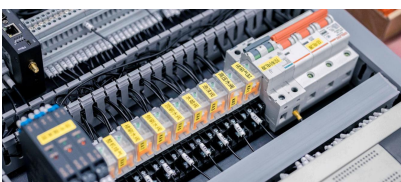
## Industry Leading Cleaning Effect

Shinewash car washing machine is equipped with the automatic spraying function of car washing liquid and water wax, and the brush can automatically change its posture with the car body to achieve 360 degree non dead angle cleaning. The brush is made of imported materials without damaging the car paint.



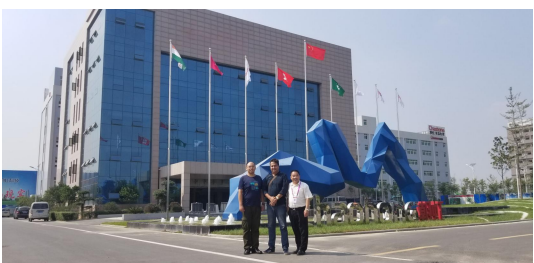
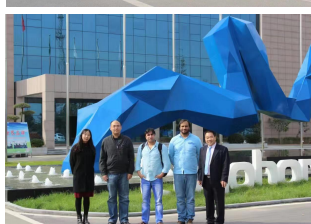
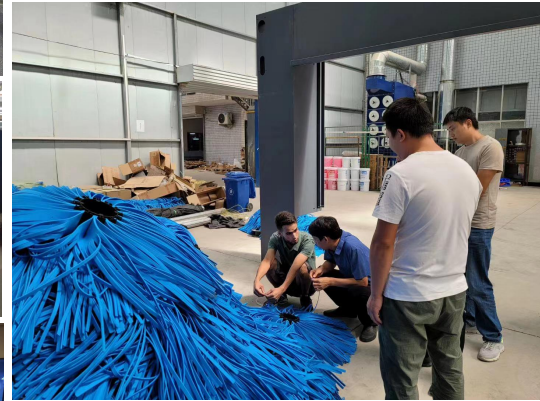
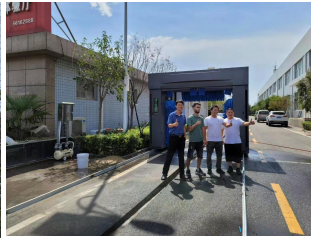
## Program Control, 24-hour Business Unattended

Support remote control, program scanning and startup, and can be completely unattended and open for 24 hours. At the same time, we provide customers with platform customization services, and develop special car washing control platforms and programs for customers.

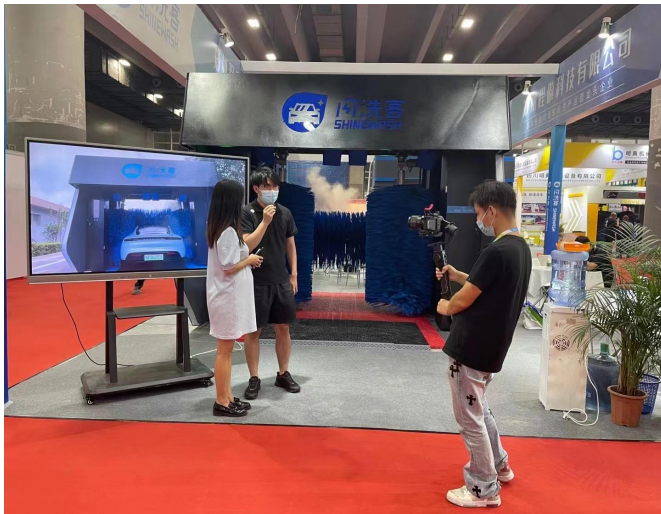
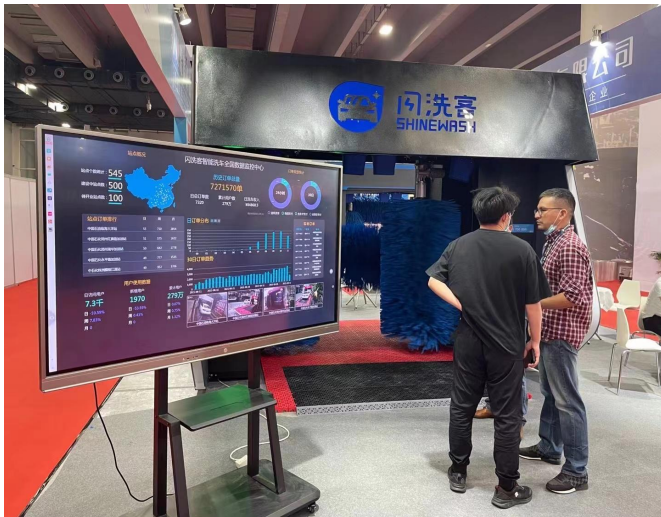


## PLC Remote Control System

Fully automatic Mitsubishi PLC computer control system, faster operation speed, lower failure rate, and can be updated remotely, remote monitoring, remote diagnosis, remote control eliminate the need for a service technician and reduce the downtime and maintaince costs.



Welcome your visit to our factory



# Successful Case

**SHINE  
WASH**





**ZHENGZHOU SHINEWASH TECHNOLOGY CO., LTD.**

Web: <https://www.shinewashtec.com>

E-mail: [sales@shinewashtec.com](mailto:sales@shinewashtec.com)

Tel/whatsapp/wechat:008618638773817

ADD: No.270th XinGang Avenue,Airport Economic Zone, Zhengzhou City, China.