



*SHINE WASH*

Professional Manufacturer of Car Washing Machines

>>>>>

**SHINE  
WASH**

郑州程傲智能科技有限公司

Zhengzhou ShineWash Technology Co., Ltd.

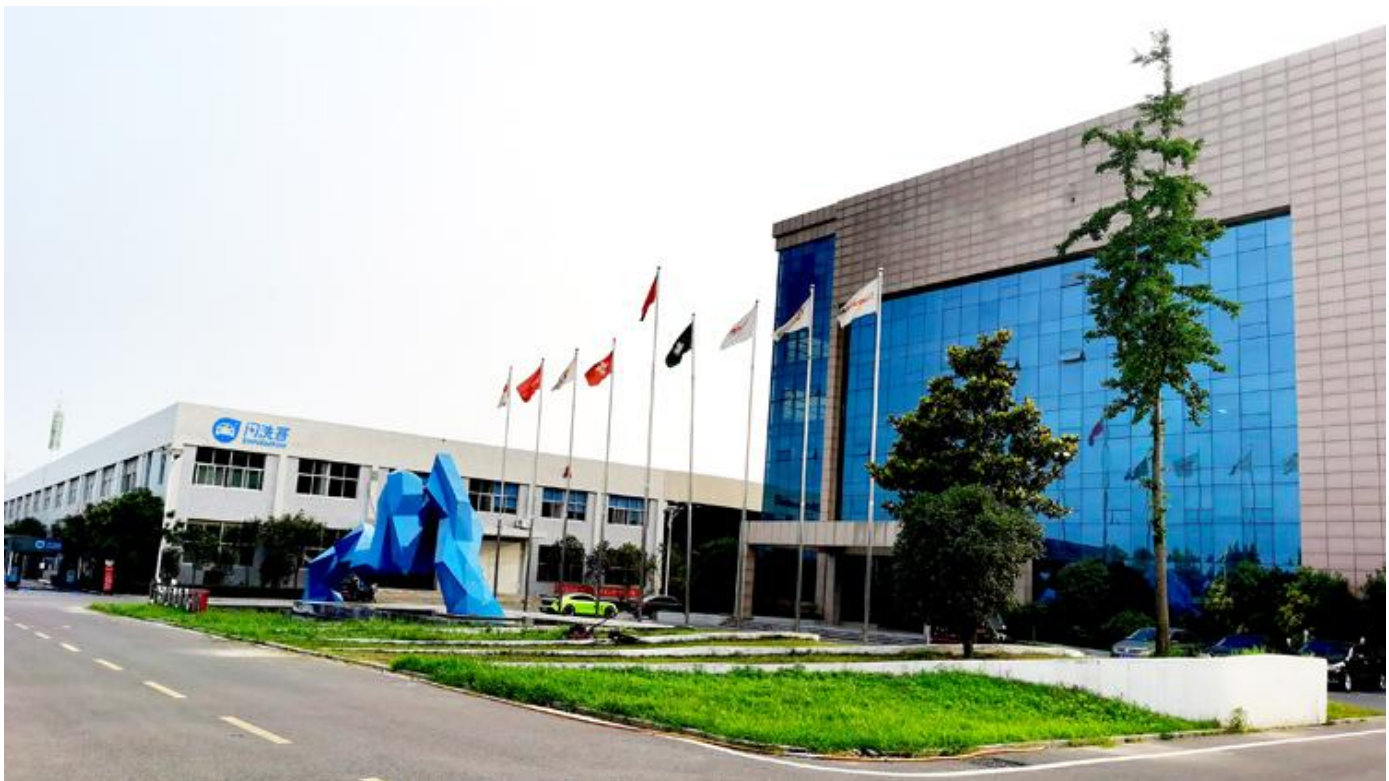
SHINEWASH was founded in 2016, a leading manufacturer of automatic car washing equipment in China, integrating design and development, production, sales, after-sales. Obtained ISO9001, ISO45001, ISO14001, CE and so on.

Mainly R&D and production: Rollover car wash machine, Tunnel car wash machine and Touchless car wash machine.

At present, our products almost have been spread all over the world: Russia, USA, Canada, Mexico, German, France, Japan, Malaysia, Thailand, UAE, Australia, South Africa, Nigeria and so on.

SHINEWASH always adhere to the needs of customers as the guide, in order to create high-quality, high-reliability, energy-saving automatic car washing equipment, to provide a variety of high-quality services.

Warmly welcome people to visit, exchange and negotiate. We are willing to be your ideal partner!







## Warehouse show



## Packaging & shipment





# Certificate



# Rollover Type



Machine Size (m)	L2.2*W3.6*H2.96	Water Wax Consumption	10ML/Car
Max. Car Size (m)	L6*W2.1*H2.1	Electricity Consumption	0.6KWH/Car
Standard Installation Size (m)	L11*W3.7*H3.1	Power Supply	380V 50HZ 20KVA
Suitable Cars	Car / Jeep / minivan with less than 7 seats	Power	25KW
Wash Time	2.5-5min/Car	Top Brush	1
Water Consumption	60-80L/Car	Big Vertical Brush	2
Shampoo Consumption	10ML/Car	Skirt Brush	2



Machine Size (m)	L2.85*W3.85*H3	Water Wax Consumption	10ML/Car
Max. Car Size (m)	L6*W2.1*H2.1	Electricity Consumption	0.6KWH/Car
Standard Installation Size (m)	L11*W3.8*H3.1	Power Supply	380V 50HZ 20KVA
Suitable Cars	Car / Jeep / minivan with less than 7 seats	Power	25KW
Wash Time	2.5-5min/Car	Top Brush	1
Water Consumption	60-80L/Car	Big Vertical Brush	2
Shampoo Consumption	10ML/Car	Skirt Brush	2



Machine Size (m)	L3.41*W3.7*H2.9	Water Wax Consumption	10ML/Car
Max. Car Size (m)	L6*W2.1*H2.1	Electricity Consumption	0.6KWH/Car
Standard Installation Size (m)	L11*W3.7*H3.1	Power Supply	380V 50HZ 20KVA
Suitable Cars	Car / Jeep / minivan with less than 7 seats	Power	25KW
Wash Time	2.5-5min/Car	Top Brush	1
Water Consumption	60-80L/Car	Big Vertical Brush	2
Shampoo Consumption	10ML/Car	Skirt Brush	2



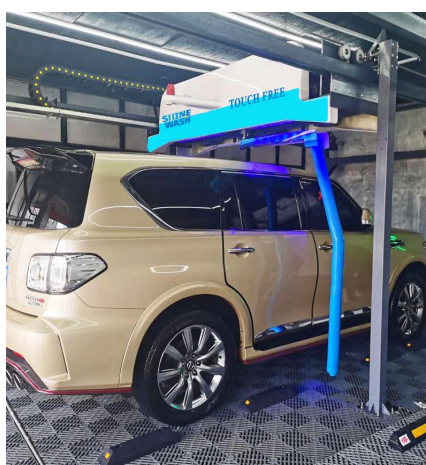
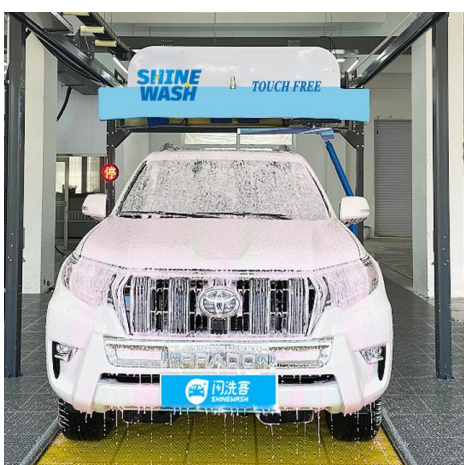
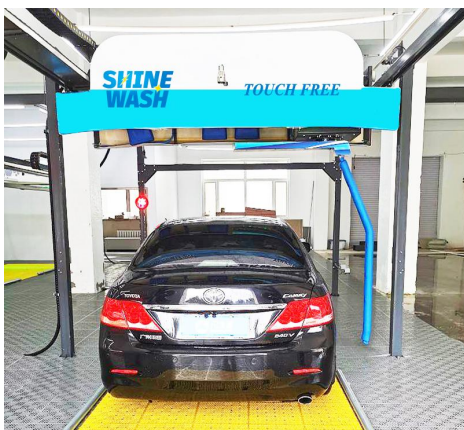
# Tunnel Type



Model	Tunnel-type 7Brush		Tunnel-type 9Brush		Tunnel-type 11Brush		Tunnel-type 14Brush	
Machine Size (m)	L10*W4*H3		L12.5*W4*H3		L15*W4*H3		L17.5*W4*H3	
Max. Car Size (m)	L≤unlimited*W≤2.3H≤2.1		L≤unlimited*W≤2.3*H≤2.1		L≤unlimited*W≤2.3*H≤2.1		L≤unlimited*W≤2.3*H≤2.1	
Installation Size (m)	L22*W4.5*H3.2		L24×W4.5×H3.2		L27×W4.5×H3.2		L30×W4.5×H3.2	
Suitable Cars	Sedans, SUVs, MPV, etc.							
Wash Time	1.5-3 min./car		1.5-3 min./car		1.5-3 min./car		1.5-3 min./car	
Water Consumption	80-150L/car		80-150L/car		80-150L/car		80-150L/car	
Shampoo Consumption	7ML/Car		7ML/Car		7ML/Car		7ML/Car	
Water Wax Consumption	12ML/Car		12ML/Car		12ML/Car		12ML/Car	
Electricity Consumption	0.6KWH/Car		0.6KWH/Car		0.6KWH/Car		0.6KWH/Car	
Power Supply	380V 50Hz		380V 50Hz		380V 50Hz		380V 50Hz	
Power	20KW		21KW		22KW		23KW	
Top Brush	1		1		1		1	
Big Vertical Brush	4		4		4		4	
Skirt Brush	2		4		4		4	
Horizontal Wheel Brush	/	/			2		2	
Wipe-dry Brush	/		/		/		3	

# Touchless Type

**SHINE  
WASH**



Model	K6	K9	Z9
Machine Size (m)	L7.75*W3.8*H3.2	L7.75*W3.8*H3.2	L7.75*W3.8*H3.2
Max. Car Size (m)	5.6*2.6*2.0	5.6*2.6*2.0	5.6*2.6*2.0
Installation Size (m)	L8*W4.0*H3.3	L7*W3.8*H3.1	L7.2*W3.8*H3.2
Suitable Cars	Sedans, SUVs, MPV, etc.		
Wash Time	2-5min/Car	2-5min/Car	2-5min/Car
Water Consumption	90-140L	90-140L	90-140L
Shampoo Consumption	20-150ML	20-150ML	20-150ML
Water Wax Consumption	20-150ML	20-150ML	20-150ML
Electricity Consumption	0.5-0.8KWH/Car	0.5-0.8KWH/Car	0.5-1.2KWH/Car
Power Supply	380V 50Hz	380V 50Hz	380V 50Hz
Power	15KW+12KW	15KW+22KW	15KW+22KW



**Main Parts Brand and Place of Origin**

Name	Brand	Specification	Place of Origin
Control System PLC	Mitsubishi	FX3U-80MR/ES-A	Japan
Photoelectric Sensor	Banner	S186E/S18SN6R	America
Proximity Switch	Pepperl+Fuchs	M12/M18/M30	Germany
Frequency Converter	Siemens	6SL3210-5BE17-5UVO	Germany
AC Contactor	Siemens	3RT6016-1AN22/3RT6018-1AN22	Germany
Heat Protector	Siemens	3RU6116-1AB0/1CB0/1GB0/4AB0	Germany
Switching Power Supply	Mean Well	RSP-320-24	Taiwan
Terminal Blocks	Weidmuller	UK-6N/UK-5N	Germany
Terminal Blocks	Nanou	UKK5	Zhejiang
Pneumatic Electromagnetic Valve	AirTAC	4V210-08-B terminal type DC24V PT	Taiwan
Waterproof Motor Reducer	SITI/ASJ	1: 50/1: 60/1: 15 /1: 30-0.37---1: 60-0.55	Italy /China
Fan	Yongcheng	5.5KW	Guangdong
Water Pump	Dayuan	3-96	Zhejiang
Brush	Mairun	L450*150*T3.8/L520*150*T3/L520*150*T3.8	Xiamen
Current Detector	Qidian	MK1526 AC0-5A/4-20MA power supply 24V	Anhui
Signal Isolator	Qidian	GLK-11 /4-20MA/4-20MA power supply 24V	Anhui
Solenoid Valve for Water	Yongchuang	YCD21-15GBN-S91B	Ningbo
Touch Display Screen	Weinview	MT6071iE	Taiwan
Air Cylinder	AirTAC	M32*125	Taiwan
Relay	Weidmuller	DRM270024L	Germany



### EVA soft brush

- Brush self-cleaning technology  
No water, no dust, no sand
- Not easy to deform  
Soft without damaging car paint



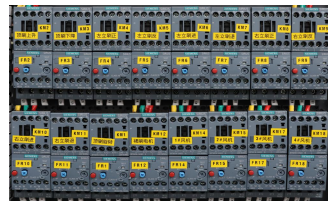
### Big Power Fan Dryer

- 4\*5.5KW high pressure drying
- Quick drying, ash deposition
- Low failure rate, long life time



### SITI Waterproof Motor

- Italy SITI international brand  
Fully enclosed integrated design
- Waterproof grade IP68  
Life time 20 years



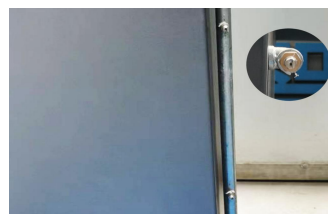
### SIEMENS Control System

- Germany Siemens famous brand
- System is stable  
With low failure rate  
Long service life



### PEPPERL+FUCHS Sensor

- Germany P+F international brand
- Waterproof level IP69K
- Accurately measure the car driving distance
- Accurately predict vehicle location



### Stainless steel pipe & nozzles

- 304 stainless steel  
High pressure resistant  
Corrosion prevention  
Rust prevention, durability



# Main Configuration

Main System		Main System	
1	Integral hot-dip galvanized steel main frame	15	Intelligent profiling current top brush system
2	Module design, mortise and tenon structure	16	New rack drive unobstructed arm side system
3	Coupling conversion transition rotation system	17	High quality anti rubbing pipe wire / stainless steel fittings
4	Specially thickened bearing, precision rotating chain	18	Pressure resistant and flexible high pressure water pipe
5	International famous brand electric and pneumatic system control center	19	LED signal light and display system
6	Triple photoelectric protection 180 degree touch anti-collision Technology	20	Anti freezing and drainage function in winter
7	22KW fixed air drying fan	21	Free switching function of multiple wash modes
8	Intelligent variable frequency speed control	22	Automatic high pressure water system
9	Intelligent proportioning of foam and water wax	23	Water circulation system
10	HD large screen embedded touch screen operation interface (central control and operating system)	24	Self protection system
11	Bonner photoelectric detection system	25	Intelligent anti-collision system
12	High performance Siti waterproof motor, reducer	26	Fault alarm and automatic processing system
13	Silent stainless steel high pressure centrifugal pump	27	Remote control parts operating system
14	Stainless steel waterproof sealing walking wheel	28	Emergency stop system of the whole machine

## Applicable places

Automatic car wash machines are widely used in car beauty shops, gas stations, charging stations, car 4S shops, parking lots and so on.

Small footprint and high utilization



Car beauty shop



Gas station



Car 4S shop



Parking lot



**Now our car wash machines are exported more than 30 countries, USA, Russia, UK, Germany, Korea, Saudi Arabia, South Africa and so on.**

**Get the highly praised**





Take part in the exhibitions to show our strength, quality and professional.

